



Shanti Education Society's

ISO 9001:2008 Certified Institution (LMC- DAC)

A. G. PATIL INSTITUTE OF TECHNOLOGY, SOLAPUR

Approved by AICTE New Delhi, Affiliated to Solapur University, Recognized by Government of Maharashtra, DTE, Mumbai
DTE CODE: EN6308

A course on Solid Modeling

Department of Mechanical Engineering

A. G. Patil Institute of Technology, Solapur

Venue: CAD-Cam Lab, Building No.2

20/02/2018 to 21/03/2018

Number of participants: 30
Trainer Name: Mr. S. V. Jinde

Coordinator: Prof. G. R. Deshpande

Summary:

The workshop was instrumental for the students of mechanical engineering department. The experience of the resource person was vital for demonstration of the software.

Objective was to familiarize students with upcoming software's such that they get trained in it and get a good job after their graduation.

Solid Modeling Workshop

Final Test for assessment of participants

Total Questions: 10

Total Marks: 10

Duration: 30 minutes

All questions are compulsory/Tick the appropriate answer with blue ink pen only.

Name of Participant:

1 In the following geometric modeling techniques which is not a three dimensional modeling?

- (a) Wireframe modeling
- (b) Drafting
- (c) Surface modeling
- (d) Solid modeling

2 In the following three-dimensional modeling techniques, which do not require much computer time and memory?

- (a) Wireframe modeling
- (b) Solid modeling
- (c) Surface modeling
- (d) Drafting

3 B-rep and C-Rep are the methods of _____ .

- (a) solid modeling
- (b) surface modeling
- (c) wireframe modeling
- (d) 2D modeling

4 From the following, which modeler defines model without mass properties?

- (a) Wireframe
- (b) Primitive
- (c) B-rep
- (d) CSG

5 The model which is created by using basic entities of two dimensioning is called _____

- (a) surface model
- (b) wireframe model
- (c) solid model
- (d) isometric model

6 What is the basic part of the surface model on which the surface is to be drawn?

- (a) Ruled
- (b) Ruler
- (c) Size
- (d) Mesh

7 A cylinder can be created by drawing a rectangular shape using the _____ tool.

- (a) revolve
- (b) sweep
- (c) extrude
- (d) blend

8 The time required to retrieve, edit or update is less for _____ .

- (a) wireframe modeling
- (b) solid modeling
- (c) surface modeling
- (d) can't say

9. _____ can also serve as a means of geometric input for finite element analysis.

- (a) Surface model
- (b) Solid model
- (c) Wireframe model
- (d) 2D drafting

10. Which kind of model can store information about geometry and topology both?

- (a) Solid model

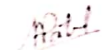
- (b) Surface model
- (c) Wireframe model
- (d) none of the mentioned

CERTIFICATE OF ATTENDANCE

THIS CERTIFICATE PROUDLY PRESENTED TO

For Attending a workshop on Solid Modeling at
A. G. Patil Institute of Technology, Solapur.
On 21/02/2018 from 10:00 AM to 5:00 PM


HOD


Principal

Solid Modeling Workshop

Final Test for assessment of participants

Total Questions: 10

Total Marks: 10

Duration: 30 minutes

All questions are compulsory/Tick the appropriate answer with blue ink pen only.

Name of Participant: Pratik Kulkarni S.E. Mech.

1 In the following geometric modeling techniques which is not a three dimensional modeling?

- (a) Wireframe modeling
- (b) Drafting
- (c) Surface modeling
- (d) Solid modeling

2 In the following three-dimensional modeling techniques, which do not require much computer time and memory?

- (a) Wireframe modeling
- (b) Solid modeling
- (c) Surface modeling
- (d) Drafting

3 B-Rep and C-Rep are the methods of _____.

- (a) solid modeling
- (b) surface modeling
- (c) wireframe modeling
- (d) 2D modeling

4 From the following, which modeler defines model without mass properties?

- (a) Wireframe
- (b) Primitive
- (c) B-Rep
- (d) CSG

5 The model which is created by using basic entities of two dimensioning is called _____.

- (a) surface model
- (b) wireframe model
- (c) solid model
- (d) isometric model

6 What is the basic part of the surface model on which the surface is to be drawn?

- (a) Ruled
- (b) Ruler
- (c) Size
- (d) Mesh

7 A cylinder can be created by drawing a rectangular shape using the _____ tool.

- (a) revolve
- (b) sweep
- (c) extrude
- (d) blend

8 The time required to retrieve, edit or update is less for _____.

- (a) wireframe modeling
- (b) solid modeling
- (c) surface modeling
- (d) can't say

9. _____ can also serve as a means of geometric input for finite element analysis.

- (a) Surface model
- (b) Solid model
- (c) Wireframe model
- (d) 2D drafting

10. Which kind of model can store information about geometry and topology both?

- (a) Solid model

(b) Surface model

(c) Wireframe model

~~(d) none of the mentioned~~

A. G. Patil Institute of Technology, Solapur

Mechanical Engineering Department

Training course on Solid Modeling using CATIA Software (Attendance Sheet)

Sr. No.	Name of Student	20-Feb	21-Feb	22-Feb	23-Feb	26-Feb	27-Feb	28-Feb	1-Mar	2-Mar	5-Mar	6-Mar
1	PURI VIKRAM SHISHANKAR	P	P	P	P	P	P	P	P	P	P	P
2	MANE ABHISHEK BALASAHEB	P	P	P	P	P	P	P	P	P	A	P
3	BIRAJDAR CHANU VIR R	A	P	P	P	P	P	P	P	P	P	A
4	PANCHAL PATTESHWAR SHIVAJI	P	P	A	P	P	P	P	A	P	P	P
5	SWAMIRAGHAVI NDRA IRAYYA	P	P	P	P	P	P	P	P	P	P	P
6	KONADE AVINASH ANILKUMAR	P	P	P	P	A	P	P	P	P	P	P
7	KULKARNI PRATIK ASHOK	P	P	P	P	P	P	P	A	P	P	P
8	KULKARNI SAMARTH M	A	A	P	A	P	A	P	P	A	P	P
9	KULKARNI SAUR V DATTATRAY	P	P	P	P	P	P	P	P	P	P	P
10	MAHAMUNI YOGESH B	P	P	P	P	P	P	P	P	P	P	P
11	MALVE VISHAL DINANATH	P	P	P	P	P	P	P	P	P	P	P
12	MANTHANGAUDA SHIVANAND G	P	A	P	A	P	P	P	A	P	P	P
13	MULINTI VALLABI SHRIKANT	P	P	P	P	P	P	A	P	P	P	P
14	PATIL SHIVSHARAN SURYAKANT	P	P	P	P	P	P	P	P	P	P	P
15	RATHOD BALASAHEB NAMDEV	A	P	P	P	P	P	P	P	A	P	P
16	REURE PRAMOD NILKANTH	P	P	P	P	P	P	P	P	P	P	P
17	SANADI ANISH CHANUSAB	P	P	A	P	P	P	P	P	P	P	A
18	MARGUR SAGAR S NIL	P	P	P	P	P	P	P	A	P	P	P
19	NALWADE TEJAS ARUN	P	P	P	P	P	P	A	P	P	P	P
20	NIKAM VIJARAJ SIBHASH	P	P	P	P	P	P	P	P	A	P	P
21	PATIL VAIBHAV PANDIT	P	A	P	P	P	P	P	P	P	A	P
22	POTDAR MAHESH ASHOK	P	P	P	P	P	P	P	P	P	P	P
23	SALGARE RANJET BIRAPPA	P	P	P	P	P	P	A	P	P	P	P
24	SARADE AJAY UTTAM	P	P	P	P	P	P	P	P	P	P	P
25	SHAIKH MUNAF ISMAIL	P	P	P	P	A	P	P	P	P	P	P
26	GAUR DEEPA MALINATH	P	P	A	P	P	P	P	P	P	P	P
27	JADHAV SNEHAL YGANATH	P	P	P	P	P	P	P	P	P	P	P
28	KOLI ASHWINI SURESH	P	P	P	P	P	P	P	P	P	P	P
29	PYADSHINGE GANGABAI M	P	P	P	P	P	P	P	P	A	A	P
30	SWAMI ONKAR RAMAYYA	P	P	P	P	P	P	P	P	P	P	P

Sr. No.	Name of Student	7-Mar	8-Mar	9-Mar	12-Mar	13-Mar	14-Mar	15-Mar	16-Mar	19-Mar	20-Mar	21-Mar
1	PURI VIKRAM SHISHANKAR	P	P	P	P	P	P	P	P	P	P	P
2	MANE ABHISHEK BALASAHEB	P	P	P	P	A	P	P	P	P	P	P
3	BIRAJDAR CHANVVIR R	P	P	A	P	P	P	A	P	A	P	P
4	PANCHAL PATTESHWAR SHIVAJI	P	P	P	P	P	A	P	P	P	A	P
5	SWAMI RAGHAVENDRA IRAYYA	P	P	P	P	P	P	P	P	A	P	A
6	KONADE AVINASH ANILKUMAR	A	P	P	A	P	P	P	P	P	P	P
7	KULKARNI PRATIK ASHOK	P	A	P	P	P	P	A	P	P	A	P
8	KULKARNI SAMARTH M	P	P	P	P	P	A	P	P	P	P	P
9	KULKARNI SAURAV DATTATRAY	P	P	P	P	P	A	P	P	P	P	P
10	MAHAMUNI YOGESH B	P	P	A	A	P	P	A	P	P	P	A
11	MALVE VISHAL DINANATH	P	P	P	P	P	P	P	P	P	P	P
12	MANTHANGAUDA SHIVANAND G	P	P	P	P	P	P	P	P	P	P	P
13	MULINTI VALLABH SHRIKANT	P	P	P	P	P	A	P	P	P	P	P
14	PATIL SHIV SHARAN SURYAKANT	P	P	P	P	P	P	A	A	P	P	P
15	RATHOD BALASAHEB NAMDEV	P	P	P	P	P	A	P	P	P	P	P
16	IREURE PRAMOD NILKANTH	P	P	P	P	A	P	P	P	P	P	P
17	SANADI ANISH CHANUSAB	P	P	P	P	P	P	P	P	P	P	P
18	MARGUR SAGAR SUNIL	P	P	A	P	P	A	P	P	P	P	A
19	NALWADE TEJAS ARUN	A	P	P	A	P	P	P	P	A	P	P
20	NIKAM VIJARAJ SUBHASH	P	P	P	P	P	A	P	P	P	A	P
21	PATIL VAIBHAV PANDIT	P	P	P	P	P	P	A	P	P	P	P
22	POTDAR MAHESH ASHOK	P	A	P	P	P	P	P	P	P	P	P
23	SALGARE RANJET BIRAPPA	P	P	P	P	A	P	P	P	P	P	P
24	SARADE AJAY UTTAM	P	P	P	P	P	P	P	P	A	P	P
25	SHAIKH MU NAF ISMAIL	P	P	P	P	P	P	P	A	P	A	P
26	GAUR DEEPA MALLINATH	A	P	P	P	P	P	P	P	P	P	P
27	JADHAV SNIHAL NAGANATH	P	P	P	P	A	A	P	P	P	P	P
28	KOLI ASHWINI SURESH	P	P	A	A	P	P	A	P	A	P	P
29	PYADSHINGI GANGABAI NI	P	P	P	P	P	P	P	P	P	P	P
30	SWAMI ONKAR RAMAYYA	P	P	P	P	P	P	P	P	P	A	P

Coordinator

HoD

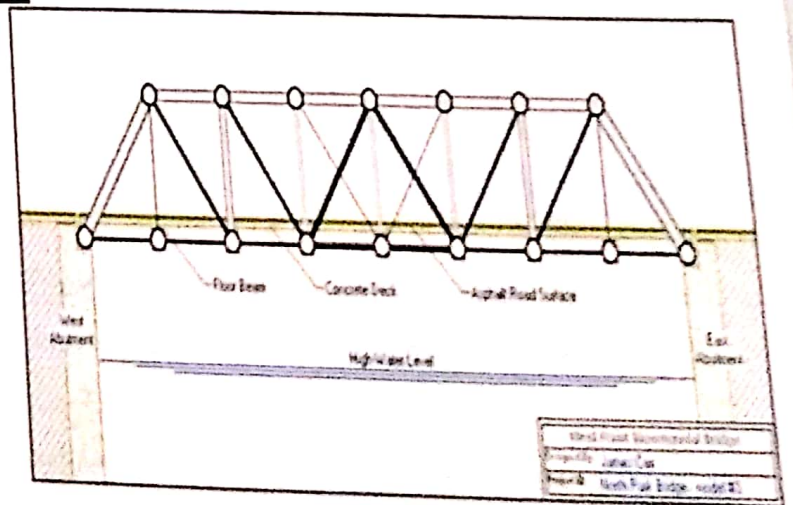
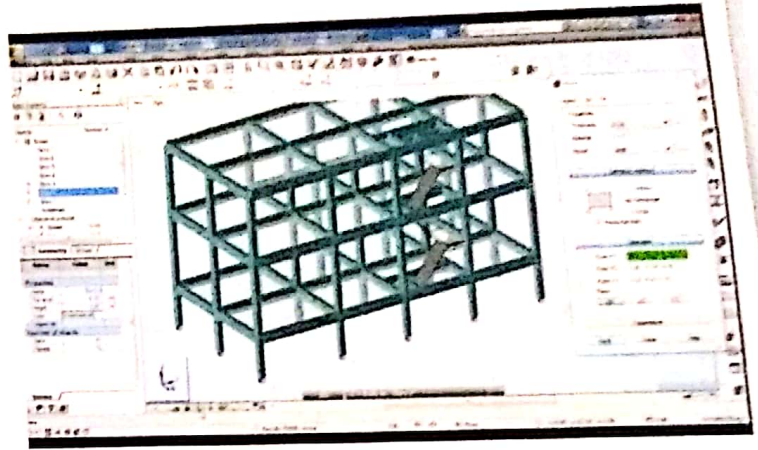
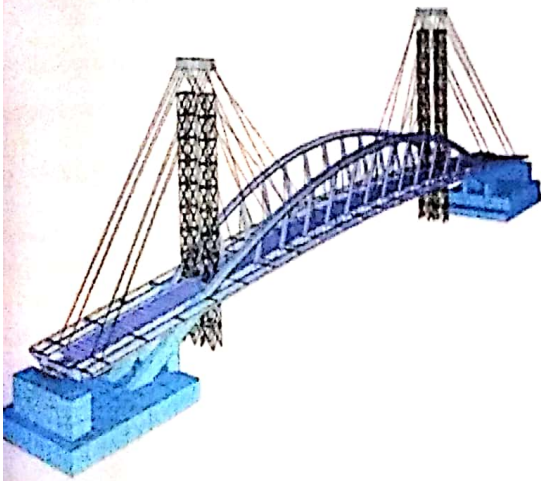
**JOB ORIENTED
INDUSTRIAL TRAINING
&
WORKSHOP
PROGRAM**



ADJ Infotech

**CIVIL &
MECHANICAL
ENGINEERING**

INDUSTRIAL TRAINING TO
BOOST THE CAPABILITIES FOR
EMPLOYABILITY



INDUSTRIAL TRAINING PROGRAMS

The curriculum developed by the institute lays a stress both on basics & latest developments.

We believe in practical learning method. Our training modules are totally practical and job oriented related to latest development of technology.

1. Structure Design & Analysis

Structural analysis is the determination of the effects of loads on physical structures and their components. Structures subject to this type of analysis include all that must withstand loads, such as buildings, bridges. In this Workshop Session students will get deep understanding of structure design parameters, modes of failure and different types of analysis.

Registration Charges: - 950/- per participant.

Duration :- 2 Days

2. Bridge Designing & Analysis

Modeling, analysis and design of bridge structures have been integrated into Software to create the ultimate in computerized engineering tools. The ease with which all of these tasks can be accomplished makes Engineering Simulation Tool the most versatile and productive program available on the market today.

Using Simulation Tool, engineers can easily define complex bridge geometries, boundary conditions and load cases. The bridge models are defined parametrically, using terms that are familiar to bridge engineers such as layout lines, spans, bearings, abutments, bents, and hinges and post-tensioning.

Students will get task for Designing of Live Bridge with Stick Materials and there will be Load Testing Round

or
analysis.

Registration Charges: - 950/- per participant.

Duration :- 2 Days

3. Skyscrapers/ Tall Building Designing

The design and construction of skyscrapers involves creating safe, habitable spaces in very high buildings. The buildings must support their weight, resist wind and earthquakes, and protect occupants from fire. Yet they must also be conveniently accessible, even on the upper floors, and provide utilities and a comfortable climate for the occupants.

In this Workshop the main focus will be on Analysis of Structure with Wind Load & Earthquake Load, concept of balancing of Tall Structure.

Registration Charges: - 950/- per participant.

Duration :- 2 Days

1. Foundation Designing & Analysis

One of our key tools for foundation analysis and foundation design is STADD Foundation. The software enables us to review results on-screen and modify the structure as appropriate. Final analysis is then provided in hard copy form. It also allows for various design alternatives, including computer design checks of structural members selected by the engineer. This software flags any overstressed members for modification. It also incorporates a subprogram for structural member "least weight" design.

Registration Charges: - 950/- per participant.
Duration :- 2 Days

2. Revit Architecture - BIM

Revit is software for BIM (US site). Its powerful tools let you use the intelligent model-based process to plan, design, construct and manage buildings and infrastructure. Revit supports a multi-discipline design process for collaborative design.

It allows users to design a building and structure and its components in 3D, annotate the model with 2D drafting elements, and access building information from the building model's database.

Registration Charges: - 950/- per participant.
Duration :- 2 Days

3. DAMS Designing with CFD

Dam designing is one of the complex designs for the civil Engineers. As per the concept of sustainability it should be efficient & accurate design. In the 2 Days workshop students will learn detailed designing aspects of the Dam and they will also learn how to apply numerical solver and how to perform CFD on dam to make it more efficient & durable.

Registration Charges: - 950/- per participant.
Duration :- 2 Days

4. DAMS MECHANISM - HANDS on Practical Working Device of DAM

Dams having no of Hydraulics Devices & components and having complex mechanism that stops or restricts the flow of water or underground streams. Reservoirs created by dams not only suppress floods but also provide water for activities such as irrigation, human consumption, industrial use, aquaculture, and navigability. Hydropower is often used in conjunction with dams to generate electricity.

In Two Days workshop students will learn the complete mechanism and designing parameters of Dam Structure and after that there will be a hands on practical session in which students will see and will operate the hydraulics components of dams, working mechanism.

Registration Charges: - 950/- per participant.
Duration :- 2 Days

Shanti Education Society's



ISO 9001:2008 Certified Institution (LMS-DAC)

A. G. PATIL INSTITUTE OF TECHNOLOGY SOLAPUR

Approved by AICTE, New Delhi, Affiliated to Dr. Babasaheb Ambedkar Technological University, Recognized by Government of Maharashtra, DTE, Mumbai.
DTE CODE : EN 6308
NAAC Accredited



Training and Placement Cell

Budget Estimation of Technical Training for A. Y.-2018-19 (As per MOU).

Sr. No.	Branch's	Class	Courses	Cost and Hours	Cost Per Course
1	CE	B.E.	PHP	2000 Rs (Per Hour) *60 Hrs.	1,20,000
2	MECH.	B.E.	Ansys	2000 Rs (Per Hour) *60 Hrs.	1,20,000
3	CIVIL	B.E.	Staad-Pro	2000 Rs (Per Hour) *60 Hrs.	1,20,000
Total Cost					3,60,000

1st Installment=30%- Commencement of Training.

2nd Installment=30%- Completion of Training and Commencement of Placements.

3rd Installment=40%- After Successful joining of candidates in respective companies.

Note: Technical Training was completed (from 12.12.2018 to 18.12.2018).

Prof. S.V. Patil

Training & Placement Officer
A. G. Patil Institute of Technology
Solapur

Training and Placement Cell Technical Training Attendance Report

Dates	Class	Branch	Total Strength	Morning Attendance	% of Morning Attendance	Evening Attendance	% of Evening Attendance
12.12.2018	B.E.	CSE	56	28	50%	27	48%
	B.E.	MECH.	51	35	68%	25	49%
	B.E.	CIVIL	53	20	37%	20	37%
13.12.2018	B.E.	CSE	56	24	42%	25	44%
	B.E.	MECH.	51	34	66%	35	68%
	B.E.	CIVIL	53	23	43%	22	41%
14.12.2018	B.E.	CSE	56	29	51%	27	48%
	B.E.	MECH.	51	28	54%	22	43%
	B.E.	CIVIL	53	24	45%	14	26%
15.12.2018	B.E.	CSE	56	23	41%	23	41%
	B.E.	MECH.	51	30	58%	18	35%
	B.E.	CIVIL	53	14	26%	14	26%
16.12.2018	B.E.	CSE	56	16	28%	16	28%
	B.E.	MECH.	51	16	31%	12	23%
	B.E.	CIVIL	53	16	30%	15	28%
17.12.2018	B.E.	CSE	56	18	32%	18	32%
	B.E.	MECH.	51	25	49%	23	45%
	B.E.	CIVIL	53	21	39%	20	37%
18.12.2018	B.E.	CSE	56	24	42%	23	41%
	B.E.	MECH.	51	23	45%	06	11%
	B.E.	CIVIL	53	18	33%	13	24%


 Training and Placement Officer
 A.C. Chellappa

Summary:

The workshop was instrumental for the students of mechanical engineering department. The experience of the resource person was vital for demonstration of the ANSYS software.

Objective was to familiarize students with ANSYS software's such that they get trained in it and get a good job after their graduation.

ANSYS Workshop

Final Test for assessment of participants

Total Questions: 15

Total Marks: 15

Duration: 30 minutes

All questions are compulsory/Tick the appropriate answer with blue ink pen only.

Name of Participant:

1. No. of degrees of freedom for 3D Solid Element (both Hex and Tet).....

A. 3

B. 2

C. 6

D. 8

2. Large deflection option when switched ON accounts for which of the following:

A. Stiffness variation

B. Large rotations

C. Large strains

D. All of the above

3. ANSYS archive files are saved in.....format.

A. .wbpj

B. .scdoc

C. .wbpz

D. .cmdp

4. Which numerical method is used by ANSYS to converge a nonlinear solution?

A. Euler Method

B. Bisection Method

C. Taylor's Method

D. Newton-Raphson Method

5. Stresses and strains calculated on an element at.....

A. Nodes

B. Integration points

C. Element center

D. All of the above

6. Which of these loads are NOT supported in Harmonic Analysis?

A. Gravity Load

B. Pressure

C. Moment

D. All of the above

7. How many degrees of freedom exist for a cylindrical joint?

A. 2

B. 3

- C. 4
- D. 6

8. What are the mandatory material properties needed for Static Structural Analysis?

- A. Young's Modulus and Yield strength
- B. Young's Modulus and Poisson's ratio
- C. Yield Strength and Poisson's ratio
- D. Ultimate strength and Yield Strength

9. In ANSYS meshing, what does the pinch option in the local mesh control do?

- A. Generate prism layer near free surfaces
- B. Remove intricate & small features.
- C. Create a structured mesh on a face
- D. Move nodes around a local region

10. Possible to copy (Ctrl +C) and paste (ctrl + V) any geometrical entities such as curves, faces, and bodies in Space Claim.

- A. True
- B. False

11. Both the Pull Tool and Move Tool can be used to extrude a face.

- A. True
- B. False

12. A body suppressed in Space Claim will be imported into Mechanical.

- A. True
- B. False

13. Acceleration can be applied to a single individual part of an assembly.

- A. True
- B. False

14. Results from Random Vibration Analysis are frequency dependent.

- A. True
- B. False

15. FEM gives an exact solution to problems.

- A. True
- B. False

ANSYS Workshop

Final Test for assessment of participants

Total Questions: 14

Total Marks: 14

Duration: 40 minutes

All questions are compulsory / Tick the appropriate answer with blue ink pen only.

Name of Participant: *[Handwritten Name]*

1. No. of degrees of freedom for 3D Solid Element (both Hex and Tet).....
 A. 1
 B. 2
 C. 6
 D. 8

2. Large deflection option when switched ON accounts for which of the following:
 A. Stiffness variation
 B. Large rotations
 C. Large strains
 D. All of the above

3. ANSYS archive files are saved in.....format.
 A. .wbq
 B. .xsbw
 C. .wbpa
 D. .endp

4. Which numerical method is used by ANSYS to converge a nonlinear solution?
 A. Euler Method
 B. Bisection Method
 C. Taylor's Method
 D. Newton-Raphson Method

5. Stresses and strains calculated on an element at.....
 A. Nodes
 B. Integration points
 C. Element center
 D. All of the above

6. Which of these loads are NOT supported in Harmonic Analysis?
 A. Gravity Load
 B. Pressure
 C. Moment
 D. All of the above

7. How many degrees of freedom exist for a cylindrical joint?
 A. 2
 B. 3

- C. 4
- D. 6

8. What are the mandatory material properties needed for Static Structural Analysis?

- A. Young's Modulus and Yield strength
- B. Young's Modulus and Poisson's ratio
- C. Yield Strength and Poisson's ratio
- D. Ultimate strength and Yield Strength

9. In ANSYS meshing, what does the pinch option in the local mesh control do?

- A. Generate prism layer near free surfaces
- B. Remove intricate & small features.
- C. Create a structured mesh on a face
- D. Move nodes around a local region

10. Possible to copy (Ctrl +C) and paste (ctrl + V) any geometrical entities such as curves, faces, and bodies in Space Claim.

- A. True
- B. False

11. Both the Pull Tool and Move Tool can be used to extrude a face.

- A. True
- B. False

12. A body suppressed in Space Claim will be imported into Mechanical.

- A. True
- B. False

13. Acceleration can be applied to a single individual part of an assembly.

- A. True
- B. False

14. Results from Random Vibration Analysis are frequency dependent.

- A. True
- B. False

15. FEM gives an exact solution to problems.

- A. True
- B. False



Certificate of Participation

THE FOLLOWING AWARD IS GIVEN TO

for attending and actively participating in the
workshop on ANSYS, organized by A. G. Patil
Institute of Technology, Solapur on 11th Dec
2018.



Head of Department

Participant



A. G. PATIL INSTITUTE OF TECHNOLOGY SOLAPUR

Approved by AICTE, New Delhi, Affiliated to Dr. Babasaheb Ambedkar Technological University, Recognized by Government of Maharashtra, DTE, Mumbai
NAAC Accredited

DTE CODE : EN 6308

TRAINING AND PLACEMENT CELL

M/E	Roll.No.	Branch:	MECH.	Date:	12/12/18	Class:	B.E.	Sign.	Name	Roll.No.	Name	Sign.	Speaker:
One Week Workshop on Asys :													
	1								Shasale Rohini uttam	30	Patil Shivakrishna S.		
	2								Bhui Kirti Babu	31	Rathod Babasaheb N.		
	3								Jadmale shobha m	32	Reure Promod N.		
	4								mane shweta S.	33	Sayed Shadab W		
	5									34	Shirasikar Ajay D.		
	6								Sanghate shruti D.	35			
	7								Samane Adarsh K.	36	Avinash S. Vachhe		
	8								Bansode Rushikesh R.	37	Vadnal Venugopal Ravi		
	9								Bansode Samant R	38			
	10								Birajdar Shivraj S.	39	Deshpande Shantam N.		
	11									40			
	12								Deshmukh Pradyumna A.	41	Satore Santosh D.		
	13									42	Ninod chavaguri		
	14								Ganji Yadviri J.	43			
	15								Ghoshke Swapnil S.	44			
	16								Gore Shubham	45	Bagarkar Z. A		
	17								Gore Yogesh	46	Chaudhale Surenkeshing		
	18									47			
	19									48			
	20								Kadurkar Sachin B. S.B.I.C.V	49			
	21								Kanhu S. Santosh. Rajkumar	50			
	22								Kanade Avinash A.	51			
	23									52			
	24								Khalikarni Samarth M.	53			
	25									54			
	26								Maharajni Yashesh B.	55			
	27								Molave Nishal D.	56			
	28								Mulhargarala S. G.	57			
	29								Mullik V. S.	58			
										36			
										35			
										34			
										33			
										32			
										31			
										30			

Patil
12.12.2018

35
51

Patil
12/12/18



Shant Education Society's

ISO 9001:2008 Certified Institution (LMS-Q)

A. G. PATIL INSTITUTE OF TECHNOLOGY SOLAPUR

Approved by AICTE, New Delhi, Affiliated to Dr. Babasaheb Ambedkar Technological University, Recognized by Government of Maharashtra, DTE, MUM
DTE CODE : EN 6308 NAAC ACCREDITED

TRAINING AND PLACEMENT CELL

M/E	Branch:	MECH.	Date:	12/12/18	Class:	B.E.	Speaker:
	One Week Workshop on Asys :						
Roll.No.	Name	Sign.	Roll.No.	Name	Sign.		
1	Bhosale Rohini	Bhosale	30	Patil Shivashankar S.	Patil		
2	Bhu Kirti Babul	Bhu	31				
3	Jadhav Sneha	Jadhav	32	Konade Anirudh A.	Konade		
4	Mane Shubeta	Mane	33	Sayed Shadab W	Sayed		
5			34	Shirwadikar Anas D.	AS		
6	Sangave Shubh P	Sangave	35				
7	Bhambhani Haresh K.	Bhambhani	36	Vaicche Anirudh S.	Vaicche		
8			37	Naldinal Venugopal R.	Naldinal		
9			38				
10	Birajdar Shivraj S.	Birajdar	39				
11			40	Sawade Anurag H.	Sawade		
12	Debnikumbh Pradyumn A	Debnikumbh	41	Sutar S.H	Sutar		
13			42	Vinod Chougale	Vinod		
14	Ganti T.J.	Ganti	43				
15			44				
16			45				
17	GNV Yogesh	GNV	46				
18			47				
19			48	Mahamandkare	Mahamandkare		
20	Patil Parag S.R.	Patil	49				
21	Kannur Sambh R.	Kannur	50				
22			51				
23			52				
24	Kulkarni Samarth M.	Kulkarni	53				
25			54				
26	Maharaj Yash B.	Maharaj	55				
27	Mahve Vishal D	Mahve	56				
28			57				
29			58				

Dilker
12/12/18

25/51

12.12.2018



A. G. PAIL INSTITUTE OF TECHNOLOGY SOLAPUR

Approved by AICTE, New Delhi, Affiliated to Dr. Babasaheb Ambedkar Technological University, Recognized by Government of Maharashtra, DTE, Pune
DTE CODE : EN 6308
NAAC ACCREDITED

TRAINING AND PLACEMENT CELL

N/E (1) Branch: MECH. Date: 13/12/18 Class: B.E. Speaker:

Roll.No.	Name	Sign.	Roll.No.	Name	Sign.
1	Bhaskar B. B.	Bhaskar B. B.	30		
2	Bhaskar B. B.	Bhaskar B. B.	31		
3	Jadhav S. M.	Jadhav S. M.	32	Reore P. N.	Reore P. N.
4	Mane S. S.	Mane S. S.	33	Sayed M. Shadab. M.	Sayed M. Shadab. M.
5			34		
6	Sangane S. O.	Sangane S. O.	35		
7			36	Vasude A. S.	Vasude A. S.
8	Ramesh R. R.	Ramesh R. R.	37	Vaithal Venugopal. R.	Vaithal Venugopal. R.
9	Ramesh R. R.	Ramesh R. R.	38		
10	Bijaydar Shivraj S.	Bijaydar Shivraj S.	39		
11	R. N.	R. N.	40	Soni A. C.	Soni A. C.
12	Debmishra Pradyumn. D. R. N.	Debmishra Pradyumn. D. R. N.	41	Sonay S. S.	Sonay S. S.
13	D. Uche Mahesh. U.	D. Uche Mahesh. U.	42	Chougale Y. M.	Chougale Y. M.
14	Ganai Jagjiri J.	Ganai Jagjiri J.	43		
15	Shodake S. Y. S.	Shodake S. Y. S.	44	Bhambhani Yashraj. V.	Bhambhani Yashraj. V.
16	Core. Shubham.	Core. Shubham.	45		
17	Core Yogesh	Core Yogesh	46		
18			47		
19	Kabbar Ambar. B.	Kabbar Ambar. B.	48	Shambharambhe B. B. S.	Shambharambhe B. B. S.
20	Kulkarni S. S.	Kulkarni S. S.	49		
21	Santosh. Rajkumar. Kanur.	Santosh. Rajkumar. Kanur.	50		
22	Kanade Apurvesh. A.	Kanade Apurvesh. A.	51	Mulla S. S.	Mulla S. S.
23	Kulkarni Pratik. A.	Kulkarni Pratik. A.	52		
24			53		
25	Krup Karnal S. S.	Krup Karnal S. S.	54		
26			55		
27	Mohar Vishal D.	Mohar Vishal D.	56		
28	Mansingh. S. S.	Mansingh. S. S.	57		
29	Mansingh. Y. S.	Mansingh. Y. S.	58		

34/51
13/12/18

13/12/18



A. G. PATIL INSTITUTE OF TECHNOLOGY SOLAPUR

Approved by AICTE, New Delhi. A Branch of Dr. Babasaheb Ambedkar Technological University, Lonere, Maharashtra. 212. Main Gate, Solapur. Dist. Solapur. Maharashtra. 413001. Phone: 020-26611111. Website: www.agpatil.edu
 OTE CODE: EN 6308
 NAAC Accredited

TRAINING AND PLACEMENT CELL

M/E	Branch	MECH.	Date:	13/12/18	Class: B.E.	Speaker:
Roll.No.	Name	Sign.	Roll.No.	Name	Sign.	
1	Kohini Bhosale	[Signature]	30			
2	Kirti Bhalu	[Signature]	31	Rohid Babo N.	[Signature]	
3	Tadmore Susha	[Signature]	32	Reare pigmod N	[Signature]	
4	Mans shukla	[Signature]	33	Sayed. Shachab .W	[Signature]	
5			34	Shrikar Aay.D	[Signature]	
6	Sangare Shuchi	[Signature]	35			
7			36	Varsha A.S	[Signature]	
8	Pansale K.B	[Signature]	37	Madhal Srujanika	[Signature]	
9	Pawale Saurav K	[Signature]	38			
10	Pradip Singh	[Signature]	39	Shantani V. Deshpande	[Signature]	
11	Boir L.N	[Signature]	40	Sonadu G.M	[Signature]	
12	Deshmukh Pradyuma	[Signature]	41			
13			42	Chetan V.M	[Signature]	
14	Singhankar Jyoti	[Signature]	43	Sudat J.H	[Signature]	
15	Pradip Singh	[Signature]	44	Pranav Vaidya	[Signature]	
16	Sare Shikhar	[Signature]	45			
17	Gore Yogesh	[Signature]	46			
18			47			
19	Kabur Aniket	[Signature]	48	Ujjwal Ghatge	[Signature]	
20	Kallurkar Parth	[Signature]	49			
21	Kannu Suresh K	[Signature]	50			
22	Kanade Avinash A.	[Signature]	51			
23			52			
24	Kulkarni. Suresh M	[Signature]	53			
25	Kulkarni Suresh D	[Signature]	54			
26			55			
27	Maharaj Suresh D	[Signature]	56			
28	Mahajan Girish	[Signature]	57			
29	Mishra V.S.	[Signature]	58			

Patil
 13/12/18

35/51

Training & Placement Officer
 A. G. Patil Institute of Technology
 Solapur

A. G. PATIL INSTITUTE OF TECHNOLOGY SOLAPUR

Approved by AICTE, New Delhi, Affiliated to Dr. Babasaheb Ambedkar Technological University, Recognized by Government of Maharashtra, DTE, Mumbai
 DTE CODE : EN 6308
 NAAC Accredited

TRAINING AND PLACEMENT CELL

M/E M Branch: MECH. Date: 14/12/18 Class: B.E. Speaker:

Roll.No.	Name	Sign.	Roll.No.	Name	Sign.
1	Rhosale R.V.		30	Achal Shivacharan S	
2	Bhull K.B.		31		
3	Jadmal G.M		32	Reure Promod N	
4	Mane S.S		33	Wayed Shodab.W	
5			34	Shrirkas. Ajay.D.	
6			35		
7	Bamone A.K		36	Vacche A.S.	
8			37	Vadnal Venugopal Ravi	
9			38		
10			39		
11	Bole L.N		40	Arush. Sanchai	
12	Reshmukh Pradyumn		41	Siddhi S.H.	
13	Diche Mahesh		42	Chergali V.M	
14	Ghodake Suyog		43		
15	Ganji Yashraj		44	Bomen Varudraji	
16			45	Bagalwate Mohd Z. G	
17	Geore Jogesh		46		
18	Hodpal		47		
19			48	Vhanmarajkulk	
20	Kallurkar Sachin		49		
21	Santosh.P.Konmus.		50		
22	Kenale Anirudh A.		51		
23			52		
24	Kulkarni Samarth.M		53		
25			54		
26			55		
27			56		
28			57		
29	Mullinh V.S.		58		

28/51

Training & Placement Office
 A. G. Patil Institute of Technology
 Solapur

Bidkar,
 14/12/18



A. G. PATIL INSTITUTE OF TECHNOLOGY SOLAPUR


Approved by AICTE, New Delhi, Affiliated to Dr. Babasaheb Ambedkar Technological University, Recognised by Government of Maharashtra, DTE, Pune
DTE CODE: EN-6308 NAAC Accredited

TRAINING AND PLACEMENT CELL

M/E	Branch:	MECH:	Date:	Roll.No.	Name	Sign.	Speaker:
	One Week Workshop on Asys:		14/12/18	Class: B.E.			
	Roll.No.	Name	Sign.	Roll.No.	Name	Sign.	
	1	Bhosale R. U	Bhosale R. U	30	Patil S. S	Patil S. S	
	2	Bhui K. A.	Bhui K. A.	31			
	3	Jadhav S. M.	Jadhav S. M.	32	Rege P. N.	Rege P. N.	
	4	Maine S. S.	Maine S. S.	33	Wadekar S. S.	Wadekar S. S.	
	5			34	Shirsolikar A. N. D.		
	6			35			
	7	Bamane A. K.	Bamane A. K.	36	Yachnis A. S.	Yachnis A. S.	
	8			37	Vadnal Venugopal Rao	Vadnal Venugopal Rao	
	9			38			
	10			39			
	11	Rohit L. D.	Rohit L. D.	40			
	12	Deshmukh P. A.	Deshmukh P. A.	41			
	13			42			
	14	Georgi. Ganeshan. Y.	Georgi. Ganeshan. Y.	43			
	15	Shelake Shyng	Shelake Shyng	44	Bomen Vaidhraj.	Bomen Vaidhraj.	
	16			45			
	17			46			
	18			47			
	19			48	Vaidhraj R. K.	Vaidhraj R. K.	
	20	Kulkarni Sachin	Kulkarni Sachin	49			
	21	Santosh. R. Kamus.	Santosh. R. Kamus.	50			
	22	Kenade Avinash A.	Kenade Avinash A.	51			
	23			52			
	24	Kulkarni. Samarth. M.	Kulkarni. Samarth. M.	53			
	25			54			
	26			55			
	27			56			
	28			57			
	29	Mulhankar. V. S.	Mulhankar. V. S.	58			

22 / 51

14/12/18


 Training & Placement Officer
 A. G. Patil Institute of Technology
 Solapur



A. G. PATHIL INSTITUTE OF TECHNOLOGY SOLAPUR
 Approved by Government of Karnataka
 DTE CODE: 15/12/18

150/5001/2008 Government of Karnataka (U.M.S. DAD)
 Approved by Government of Karnataka
 DTE CODE: 15/12/18

TRAINING AND PLACEMENT CELL

M/E	M	Branch:	MECH.	Roll.No.	Name	Sign.	Roll.No.	Name	Sign.
One Week Workshop on Asys:									
				1	Bhassala R.L.L.	Bhassala	30		
				2	Bhui kirish R.	Bhui	31	Balabhabhaty S.K.M.V.	Balabhabhaty
				3	Lodmole S.M.	Lodmole	32	Reure Prasad S.	Reure
				4	mane shueta S.	mane	33	Sajee Lingappa M.	Sajee
				5			34	Shridhar A.J.	Shridhar
				6			35	Sindagi M.S.	Sindagi
				7			36	Vaiche A.S.	Vaiche
				8			37	Vadnal Venkatesh P.	Vadnal
				9	Birajdar Shrinay S.	Birajdar	38	Munthongoda S.G.	Munthongoda
				10	Galaj L.N.	Galaj	39		
				11	Deshpande Pradyumn	Deshpande	40	sanadi Avith C.	sanadi
				12	chake mahesh	chake	41		
				13			42	Chalge V.M.	Chalge
				14	Ganji Y.T.	Ganji	43		
				15	Ghodake Buta	Ghodake	44	Shenkar	Shenkar
				16	Gore Shubham	Gore	45	Shenkar	Shenkar
				17	Gore Yogesh	Gore	46		
				18			47		
				19	Kabbur ameer	Kabbur	48	V.Chennamathery	V.Chennamathery
				20	Kallurkar C.R.	Kallurkar	49		
				21	Karnus Santosh Rajkumar	Karnus	50		
				22	Kanade Avinash A.	Kanade	51		
				23			52		
				24			53		
				25	Kulkarni Gaurav D.	Kulkarni	54		
				26			55		
				27			56		
				28			57		
				29	Mullinti V.S.	Mullinti	58		

30 / 51

15/12/18

Training Officer
 A. G. Pathil Institute of Technology

A. G. PATIL INSTITUTE OF TECHNOLOGY SOLAPUR

Approved by AICTE, New Delhi. Affiliated to Dr. Babasaheb Ambedkar Technological University, recognized by Government of Maharashtra, DIF, Mumbai.
 OTE CODE : EN 0303 NAAC Accredited

TRAINING AND PLACEMENT CELL			
Date: 15/12/18		Class: B.E.	
M/E	Branch: MECH.	Roll.No.	Sign.
One Week Workshop on Asys :			
1	Bhosale Bahini	30	
2	Bhui Kirt	31	
3	Shodmate Sneha	32	Reure Pramad.N
4	Mane shiweta	33	WATED. VIKRABH.W
5		34	S hirreshikur AJOY.P
6		35	
7		36	Velu T A. S.
8		37	Vednal Venugopal R.
9	Birajdar Shrusay S.	38	
10		39	
11		40	
12		41	
13		42	
14	Grani J J	43	
15	Shardak Suryaj	44	Pranav Vardraj
16		45	
17	Grare Yogesh	46	
18		47	
19		48	Vhanmarathe USP
20	Var Varjear Sachin	49	
21	Chantosh R. Kammas	50	
22		51	
23		52	
24		53	
25		54	
26		55	
27		56	
28	Munshi Vetalbh S	57	
29		58	

18/51

Bidkar.
15/12/18



A. G. PATIL INSTITUTE OF TECHNOLOGY SOLAPUR
 Approved by AICTE, New Delhi, Affiliated to Dr. Babasaheb Ambedkar Technological University, Raichur, Maharashtra, 417, Mumbai.
 DTB CODE : EN 0300
 NAAC Accredited

ISO 9001:2008 Certified Institution (LMD-DAG)

MECH.		MECH.		MECH.		MECH.	
One Week Workshop on Asys :		One Week Workshop on Asys :		One Week Workshop on Asys :		One Week Workshop on Asys :	
Roll.No.	Name	Sign.	Roll.No.	Name	Sign.	Roll.No.	Name
1			30				
2	Bhaw Kirti Boblu	<i>[Signature]</i>	31				
3			32	Reure Pramod M	<i>[Signature]</i>		
4	Mande Shubra S.	<i>[Signature]</i>	33	Wayed Shodab W.	<i>[Signature]</i>		
5			34	Shirsikar Ajay D.	<i>[Signature]</i>		
6			35				
7	<i>[Signature]</i>		36	Va. W. S.	<i>[Signature]</i>		
8			37	Vadnal Venug oped R.	<i>[Signature]</i>		
9			38				
10	Birendra Shiroda S.	<i>[Signature]</i>	39				
11	Bale Laxman	<i>[Signature]</i>	40				
12			41				
13			42	Chalgeri Vinod	<i>[Signature]</i>		
14	Gani P. J.	<i>[Signature]</i>	43				
15			44	Boman Vardaraj	<i>[Signature]</i>		
16			45				
17	Tegesh Goro	<i>[Signature]</i>	46				
18			47				
19			48				
20	Kulkarni S. B.	<i>[Signature]</i>	49				
21	Kannus. Santosh R.	<i>[Signature]</i>	50				
22			51				
23			52				
24	Kulkarni Samarth M.	<i>[Signature]</i>	53				
25			54				
26			55				
27			56				
28			57				
29	Mullini Vallabh S.	<i>[Signature]</i>	58				

Teacher - Mechatronics

ABSENT

16/12/2019

16/5



A. C. PATEL INSTITUTE OF TECHNOLOGY SOLAPUR
 Solapur, Maharashtra
 ESTD 1983



TRAINING AIDS & ASSISTANTS LIST

Sl. No.	Name	Dept.	Roll No.	Register	Sign
1			31		
2			32		
3			33		
4			34		
5			35		
6			36		
7			37		
8			38		
9			39		
10			40		
11			41		
12			42		
13			43		
14			44		
15			45		
16			46		
17			47		
18			48		
19			49		
20			50		
21			51		
22			52		
23			53		
24			54		
25			55		
26			56		
27			57		
28			58		
29			59		
30			60		
31			61		
32			62		
33			63		
34			64		
35			65		
36			66		
37			67		
38			68		
39			69		
40			70		
41			71		
42			72		
43			73		
44			74		
45			75		
46			76		
47			77		
48			78		
49			79		
50			80		
51			81		
52			82		
53			83		
54			84		
55			85		
56			86		
57			87		
58			88		
59			89		
60			90		
61			91		
62			92		
63			93		
64			94		
65			95		
66			96		
67			97		
68			98		
69			99		
70			100		

13/11

Signature
 Date

A. G. PATIL INSTITUTE OF TECHNOLOGY SOLAPUR

Approved by AICTE, New Delhi, Affiliated to the Maharashtra Agricultural Technological University, Raichur, Maharashtra.
DTE CODE: EN 0308 NMAC Accredited

TRAINING AND PLACEMENT CELL

M/E	Branch	MECH.	Date:	17/12/18	Class:	B.E.	Sign.
One Week Workshop on Asys:							
	Roll.No.	Name	Sign.	Roll.No.	Name		Sign.
1		Bhadale R.H.	Bhadale	30			
2		Bhuu Kirti R.	Kirti	31			
3		Jedmate S.M.	Bhate	32			
4		MANE Shubeta S	Bhate	33	Sayed. Shadab.V		
5				34	SHIRASIKAR A.D.		
6		Singauri Shrutid	Singauri	35			
7				36	vaichhe Avinash.S		
8				37	Vadnal venugopal Ravi		
9				38			
10		Birajdar Shivraj S.	Bhir.	39			
11				40	SANAOL Anish		
12				41			
13				42	Chalgeji V.M.		
14		Ganvi Y.S.	Bhadale	43			
15		Ghadake Suyodh	Ghadake	44	Damesh Venudraoj		
16		GOPE Shubhankar	GOPE	45			
17		GORE Yogesh	GOPE	46			
18				47			
19		Kabbur. amtekar.R	Kabbur	48	Vadmanatke BK		
20		Kallur pran. Chakrin	Chakrin	49			
21		Kannus Santosh.R.	Kannus	50			
22		Korade Avinash A.	Korade	51			
23				52			
24		Kulkarni Sumath M.	Kulkarni	53			
25		Kulkarni saibav.D	Kulkarni	54			
26				55			
27				56			
28		Pir-haogouda S.C	Pir-haogouda	57			
29				58			

25 / 58

Patil
17/12/18

Training & Placement Officer
A. G. Patil Institute of Technology
Solapur

A. G. PATIL INSTITUTE OF TECHNOLOGY SOLAPUR

Approved by AICTE, New Delhi, Affiliated to Dr. Dadasaheb Ambedkar Technological University, Raichur by Government of Maharashtra, DTE, Mumbai
 DTCCODE EN 6308
 NAAC Accredited

M/E	Branch	MECH.	Date:	Roll.No.	Name	Sign.
	One Week Workshop on Asys :		17/12/18		Class: B.E.	
	Roll.No.	Name	Sign.	Roll.No.	Name	Sign.
1	Rhagale A.V.			30		
2	Rhuykar R.			31		
3	Todmare S.M.			32		
4	Mane S.S.			33	Sharda Shambhaji	
5				34	Shrikar Ajay D	
6	Singhmare S.D			35		
7				36	Vacche A-S	
8				37	Vadnal Venugopal R.	
9				38		
10	Bhosale Srinivas			39		
11	Bhosale S.			40		
12	Dechmukh Pradyumn			41		
13				42	Chalge V.M	
14	Ganji Y.H.			43		
15	Ghadake Suresh			44	Bharam Nandraj	
16				45		
17	Gose Yogesh			46		
18				47		
19				48	Vannamrao B.R	
20	Patil Karan			49		
21	Kanous-Santosh Rajkumar			50		
22	Kanale Anirach A.			51		
23				52		
24	Kulkarni Anagata M			53		
25	Kulkarni Jaydev P.			54		
26				55		
27				56		
28				57		
29				58		

Bidkar,
17/12/18

23
52

(Signature)

IME / I		Branch: IMECH.	TRAINING AND PLACEMENT CELL	
One Week Workshop on Asst:			Date: 18/12/18	Class: B.E.
Roll No.	Name	SRN.	ROLL NO.	Name
1	Shubale R. P.	20/10/18	30	Patil Shivrajendra B.
2	Pratik R. P.	20/10/18	31	
3	Jyotirmay C. M.	20/10/18	32	
4	SHUBHRO MONE	20/10/18	33	Sayed. Shadab H.
5			34	Sureshkumar A. D.
6			35	
7			36	Yashraj S. S.
8			37	Yashraj Venugopal Rao
9			38	
10	Prakash Chaitanya	20/10/18	39	
11	R. S. S.	20/10/18	40	
12	Prakash R. S.	20/10/18	41	S. S. S.
13			42	Cholega V. S.
14	Pratik S. S.	20/10/18	43	
15	Suryajyotindra	20/10/18	44	Ramesh Venkatesh
16			45	
17	Yashraj S. S.	20/10/18	46	
18			47	
19			48	
20	Kalishankar S. S.	20/10/18	49	V. S. S.
21	Kalishankar S. S.	20/10/18	50	
22	Kalishankar S. S.	20/10/18	51	
23			52	
24	Kalishankar S. S.	20/10/18	53	
25			54	
26			55	
27			56	
28			57	
29			58	

23

52

Pratik S. S.
 18/12/18

A. G. PATIL INSTITUTE OF TECHNOLOGY SOLAPUR

Approved by AICTE, New Delhi, Affiliated to D. Y. Patil Ambedkar Technological University, Recognized by Government of Maharashtra, DTE, Mumbai.
DTE CODE : EN 6308
NAAC ACCREDITED

TRAINING AND PLACEMENT CELL

M/E	Branch:	MECH.	Roll.No.	Name	Sign.	Roll.No.	Name	Sign.
	One Week Workshop on Asys :							
			1	Bhosale R.V	<i>Bhosale</i>	30		
			2	Bhui K.B.	<i>Bhui</i>	31		
			3	Telme G.S.M	<i>Telme</i>	32		
			4	Mine G.S.	<i>Mine</i>	33		
			5			34		
			6			35		
			7			36		
			8			37		
			9			38		
			10			39		
			11			40		
			12			41		
			13			42		
			14			43		
			15			44	<i>Boman Varadaj</i>	<i>Boman Varadaj</i>
			16			45		
			17			46		
			18			47		
			19			48	<i>Bhambhaleb Bhambhale</i>	<i>Bhambhaleb Bhambhale</i>
			20			49		
			21			50		
			22			51		
			23			52		
			24			53		
			25			54		
			26			55		
			27			56		
			28			57		
			29			58		

6 / 52

Bhosale
18/12/18

[Signature]
Training & Placement Officer
A. G. Patil Institute of Technology
Solapur

A. G. Patil Institute of Technology, Solapur

Mechanical Engineering Department

Training course on Solid Modeling using CATIA Software

Attendance

Sr. No.	Name of Student	20/09/20	23/09/20	26/09/20	01/10/20	05/10/20	08/10/20	10/10/20	16/10/20	17/10/20	18/10/20	21/10/20	21/10/20	21/10/20
1	PURI VIKRAM SHISHANKAR	Present	Present	Present	Present	Present	Present	Present	Present	Present	Present	Present	Present	Present
2	MANE ABHISHEK BALASAHEB	Present	Present	Present	Present	Present	Present	Present	Present	Present	Present	Present	Present	Present
3	BIRAJDAR CHANVIR R	Present	Present	Present	Present	Present	Present	Present	Present	Present	Present	Present	Present	Present
4	PANCHAL PATTESHWAR SHIVAJI	Present	Present	Present	Present	Present	Present	Present	Present	Present	Present	Present	Present	Present
5	SWAMI RAGHAVENDRA IRAYYA	Present	Present	Present	Present	Present	Present	Present	Present	Present	Present	Present	Present	Present
6	KONADE AVINASH ANILKUMAR	Present	Present	Present	Present	Present	Present	Present	Present	Present	Present	Present	Present	Present
7	KULKARNI PRATIK ASHOK	Present	Present	Present	Present	Present	Present	Present	Present	Present	Present	Present	Present	Present
8	KULKARNI SAMARTH M	Present	Present	Present	Present	Present	Present	Present	Present	Present	Present	Present	Present	Present
9	KULKARNI SAURAV DATTATRAY	Present	Present	Present	Present	Present	Present	Present	Present	Present	Present	Present	Present	Present
10	MAHAMUNI YOGESH B	Present	Present	Present	Present	Present	Present	Present	Present	Present	Present	Present	Present	Present
11	MALVE VISHAL DINANATH	Present	Present	Present	Present	Present	Present	Present	Present	Present	Present	Present	Present	Present
12	MANTHANGAUDA SHIVANAND G	Present	Present	Present	Present	Present	Present	Present	Present	Present	Present	Present	Present	Present
13	MULINTI VALLABH SHRIKANT	Present	Present	Present	Present	Present	Present	Present	Present	Present	Present	Present	Present	Present
14	PATIL SHIVSHARAN SURYAKANT	Present	Present	Present	Present	Present	Present	Present	Present	Present	Present	Present	Present	Present
15	RATHOD BALASAHEB NAMDEV	Present	Present	Present	Present	Present	Present	Present	Present	Present	Present	Present	Present	Present
16	REURE PRAMOD NILKANTH	Present	Present	Present	Present	Present	Present	Present	Present	Present	Present	Present	Present	Present
17	SANADI ANISH CHANUSAB	Present	Present	Present	Present	Present	Present	Present	Present	Present	Present	Present	Present	Present
18	MARGUR SAGAR SUNIL	Present	Present	Present	Present	Present	Present	Present	Present	Present	Present	Present	Present	Present
19	NALWADE TEJAS ARUN	Present	Present	Present	Present	Present	Present	Present	Present	Present	Present	Present	Present	Present
20	NIKAM VIJARAJ SUBHASH	Present	Present	Present	Present	Present	Present	Present	Present	Present	Present	Present	Present	Present
21	PATIL VAIBHAV PANDIT	Present	Present	Present	Present	Present	Present	Present	Present	Present	Present	Present	Present	Present
22	POTDAR MAHESH ASHOK	Present	Present	Present	Present	Present	Present	Present	Present	Present	Present	Present	Present	Present
23	SALGARE RANJET BIRAPPA	Present	Present	Present	Present	Present	Present	Present	Present	Present	Present	Present	Present	Present
24	SARADE AJAY UTTAM	Present	Present	Present	Present	Present	Present	Present	Present	Present	Present	Present	Present	Present
25	SHAIKH MUNAF ISMAIL	Present	Present	Present	Present	Present	Present	Present	Present	Present	Present	Present	Present	Present
26	GAUR DEEPA MALLINATH	Present	Present	Present	Present	Present	Present	Present	Present	Present	Present	Present	Present	Present
27	JADHAV SNEHAL NAGANATH	Present	Present	Present	Present	Present	Present	Present	Present	Present	Present	Present	Present	Present
28	KOLI ASHWINI SURESH	Present	Present	Present	Present	Present	Present	Present	Present	Present	Present	Present	Present	Present
29	PYADSHINGE GANGABAI M	Present	Present	Present	Present	Present	Present	Present	Present	Present	Present	Present	Present	Present
30	SWAMI ONKAR RAMAYYA	Present	Present	Present	Present	Present	Present	Present	Present	Present	Present	Present	Present	Present


 HoD

CERTIFICATE OF ATTENDANCE

THIS CERTIFICATE PROUDLY PRESENTED TO

SNEHAL S. JADHAV

For Attending a workshop on Solid Modeling at
A. G. Patil Institute of Technology, Solapur.
On 20/02/2018 to 21/03/2018



HoD



Principal